

Dimensions(in/mm)		
H	F	W
.039(1.00)	.059(1.50)~.069(1.75)	.079(2.00)
.059(1.50)	.079(2.00)~.089(2.25)	
.079(2.00)	.098(2.50)~.108(2.75)	.098(2.50)
.098(2.50)	≥.118(3.00)	

REV	LOCATIONS	DESCRIPTION	DATE	REVISER	APPD
1	△1	Material-Resin: Add LCP	26/NOV/20	KATE	CHERRY
2	△2	Update Housing structure	10/OCT/23	MATT	LEO

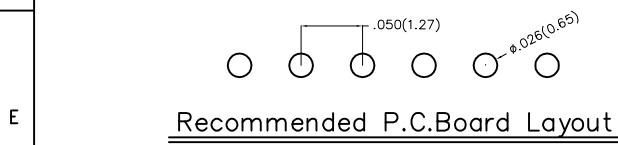
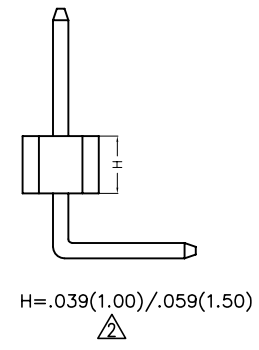
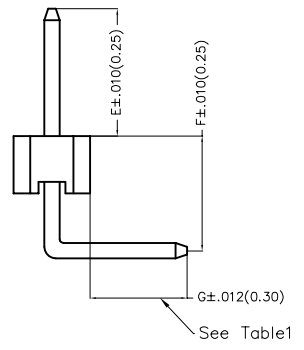
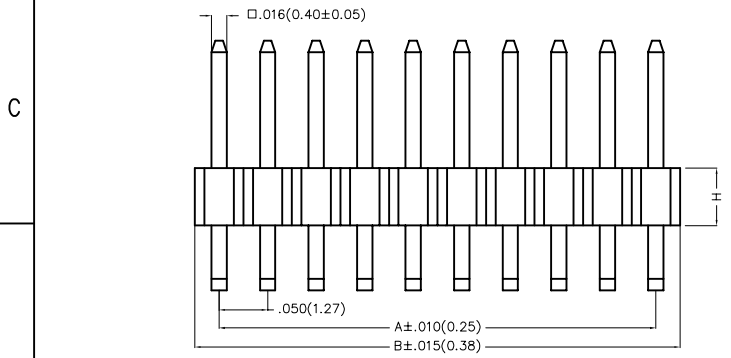
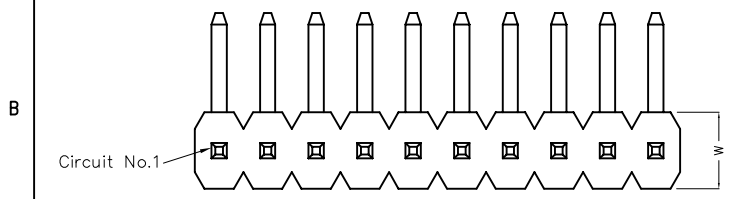
**SPECIFICATIONS**

**Electrical**

Current Rating: 1.0A AC(rms)/DC  
Voltage Rating: 250V AC(rms)/DC  
Contact Resistance: 20 mΩ Max  
Insulation Resistance: 1000 MΩ MIN  
Withstanding Voltage: 600V AC r.m.s  
Temperature Range-Operating: -40°C~+105°C

**Material and Plating**

Housing: Glass Filled Polyester (UL 94V-0), Color: Black  
Pin: Brass  
Pin Plating: Gold plated/ Selective gold plated on contact area and 120μ" Min. matte tin plated on tails area



**Ordering Information**

FPH	127	33	-	S	XX	B	X	XX	X	XX	XX	XX	B
1	2	3		4	5	6	7	8	9	10	11	12	13

Category FPH-Pin Header	2 Series Number 127-Pitch1.27mm	3 Distinction No. 33	4 Row Option S-Single Row	5 Circuits XX	6 Entry Angle B-90° Angle	7 Plating 1-Gold plated 7-Selective gold plated on contact area and matte tin plated on tails area
----------------------------	------------------------------------	-------------------------	------------------------------	------------------	------------------------------	--

8 Thickness of Plating 01-1μ" 15-15μ" Custom plate available	9 Material-Resin 3-LCP △ 4-PA6T	10 E Size 01,02...-Serial number (See Table1)	11 F Size 01,02...-Serial number (See Table1)	12 G Size 01,02...-Serial number (See Table1)	13 Packaging B-PE Bag
---	---------------------------------------	---	---	---	--------------------------

<p>THIRD ANGLE PROJECTION</p>	GENERAL TOLERANCES (UNLESS SPECIFIED)		APPROVE BY FRANK	DATE 17/DEC/19	PART NO. FPH12733-SXXBXXXXXXXXXXB	ITEM NO. FPH12733	<p>Building Technology Cornerstone</p>	
	DESIGN UNITS Inch (metric)	X.±.012(0.30)	X'.±5'	CHECKED BY CHERRY	DATE 17/DEC/19	TITLE Board to Board(Pin Header) Pitch 1.27mm 90° Angle(DIP)		
		X.XX±.008(0.20)	.X'±2'	DRAWN BY ZOEY	DATE 17/DEC/19	REV 2		SHEET NO. 1/3
	SCALE 5:1	SIZE A4	X.XX±.006(0.15)	.XX'±1'	THIS DRAWING CONTAINS INFORMATION THAT IS PROPRIETARY TO TXGA INDUSTRIAL ELECTRONICS(S.Z)CO.,LTD AND SHOULD NOT BE USED WITHOUT WRITTEN PERMISSION			
		X.XXX±.004(0.10)	.XXX'±0.5'					

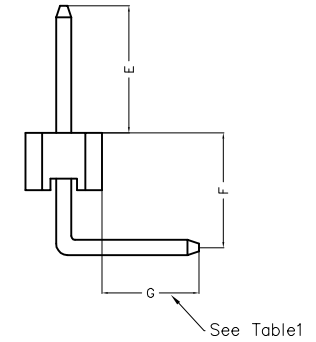
REV	LOCATIONS	DESCRIPTION	DATE	REVISER	APPD

Table1

Serial number	Dimensions (in/mm) E	Serial number	Dimensions (in/mm) E
01	.059(1.50)	19	.236(6.00)
02	.069(1.75)	20	.246(6.25)
03	.079(2.00)	21	.256(6.50)
04	.089(2.25)	22	.266(6.75)
05	.098(2.50)	23	.276(7.00)
06	.108(2.75)	24	.285(7.25)
07	.118(3.00)	25	.295(7.50)
08	.128(3.25)	26	.305(7.75)
09	.138(3.50)	27	.315(8.00)
10	.148(3.75)	28	.325(8.25)
11	.157(4.00)	29	.335(8.50)
12	.167(4.25)	30	.344(8.75)
13	.177(4.50)	31	.354(9.00)
14	.187(4.75)	32	.364(9.25)
15	.197(5.00)	33	.374(9.50)
16	.207(5.25)	34	.384(9.75)
17	.217(5.50)	35	.394(10.00)
18	.226(5.75)		

Serial number	Dimensions (in/mm) F	Serial number	Dimensions (in/mm) F
01	.059(1.50)	19	.236(6.00)
02	.069(1.75)	20	.246(6.25)
03	.079(2.00)	21	.256(6.50)
04	.089(2.25)	22	.266(6.75)
05	.098(2.50)	23	.276(7.00)
06	.108(2.75)	24	.285(7.25)
07	.118(3.00)	25	.295(7.50)
08	.128(3.25)	26	.305(7.75)
09	.138(3.50)	27	.315(8.00)
10	.148(3.75)	28	.325(8.25)
11	.157(4.00)	29	.335(8.50)
12	.167(4.25)	30	.344(8.75)
13	.177(4.50)	31	.354(9.00)
14	.187(4.75)	32	.364(9.25)
15	.197(5.00)	33	.374(9.50)
16	.207(5.25)	34	.384(9.75)
17	.217(5.50)	35	.394(10.00)
18	.226(5.75)		



Serial number	Dimensions (in/mm) G	Serial number	Dimensions (in/mm) G
01	.059(1.50)	19	.236(6.00)
02	.069(1.75)	20	.246(6.25)
03	.079(2.00)	21	.256(6.50)
04	.089(2.25)	22	.266(6.75)
05	.098(2.50)	23	.276(7.00)
06	.108(2.75)	24	.285(7.25)
07	.118(3.00)	25	.295(7.50)
08	.128(3.25)	26	.305(7.75)
09	.138(3.50)	27	.315(8.00)
10	.148(3.75)	28	.325(8.25)
11	.157(4.00)	29	.335(8.50)
12	.167(4.25)	30	.344(8.75)
13	.177(4.50)	31	.354(9.00)
14	.187(4.75)	32	.364(9.25)
15	.197(5.00)	33	.374(9.50)
16	.207(5.25)	34	.384(9.75)
17	.217(5.50)	35	.394(10.00)
18	.226(5.75)		



 THIRD ANGLE PROJECTION	GENERAL TOLERANCES (UNLESS SPECIFIED)		APPROVE BY FRANK	DATE 17/DEC/19	PART NO. FPH12733-SXXBXXXXXXXXXB	ITEM NO. FPH12733	 Building Technology Cornerstone	
	X.±.012(0.30)	X'±5'	CHECKED BY CHERRY	DATE 17/DEC/19	TITLE Board to Board(Pin Header) Pitch 1.27mm 90° Angle(DIP)			REV 2
	DESIGN UNITS Inch (metric)	X.X±.008(0.20)	.X'±2'	DRAWN BY ZOEY	DATE 17/DEC/19	THIS DRAWING CONTAINS INFORMATION THAT IS PROPRIETARY TO TXGA INDUSTRIAL ELECTRONICS(S.Z)CO.,LTD AND SHOULD NOT BE USED WITHOUT WRITTEN PERMISSION		
	SCALE 5:1	SIZE A4	X.XX±.006(0.15)	.XX'±1'				
		X.XXX±.004(0.10)	.XXX'±0.5'					

REV	LOCATIONS	DESCRIPTION	DATE	REVISER	APPD

Circuits (n)	Part No.	Dimensions(in/mm)		Circuits (n)	Part No.	Dimensions(in/mm)	
		A	B			A	B
1	FPH12733-S01BXXXXXXXXXB	—	.050(1.27)	22	FPH12733-S22BXXXXXXXXXB	1.050(26.67)	1.100(27.94)
2	FPH12733-S02BXXXXXXXXXB	.050(1.27)	.100(2.54)	23	FPH12733-S23BXXXXXXXXXB	1.100(27.94)	1.150(29.21)
3	FPH12733-S03BXXXXXXXXXB	.100(2.54)	.150(3.81)	24	FPH12733-S24BXXXXXXXXXB	1.150(29.21)	1.200(30.48)
4	FPH12733-S04BXXXXXXXXXB	.150(3.81)	.200(5.08)	25	FPH12733-S25BXXXXXXXXXB	1.200(30.48)	1.250(31.75)
5	FPH12733-S05BXXXXXXXXXB	.200(5.08)	.250(6.35)	26	FPH12733-S26BXXXXXXXXXB	1.250(31.75)	1.300(33.02)
6	FPH12733-S06BXXXXXXXXXB	.250(6.35)	.300(7.62)	27	FPH12733-S27BXXXXXXXXXB	1.300(33.02)	1.350(34.29)
7	FPH12733-S07BXXXXXXXXXB	.300(7.62)	.350(8.89)	28	FPH12733-S28BXXXXXXXXXB	1.350(34.29)	1.400(35.56)
8	FPH12733-S08BXXXXXXXXXB	.350(8.89)	.400(10.16)	29	FPH12733-S29BXXXXXXXXXB	1.400(35.56)	1.450(36.83)
9	FPH12733-S09BXXXXXXXXXB	.400(10.16)	.450(11.43)	30	FPH12733-S30BXXXXXXXXXB	1.450(36.83)	1.500(38.10)
10	FPH12733-S10BXXXXXXXXXB	.450(11.43)	.500(12.70)	31	FPH12733-S31BXXXXXXXXXB	1.500(38.10)	1.550(39.37)
11	FPH12733-S11BXXXXXXXXXB	.500(12.70)	.550(13.97)	32	FPH12733-S32BXXXXXXXXXB	1.550(39.37)	1.600(40.64)
12	FPH12733-S12BXXXXXXXXXB	.550(13.97)	.600(15.24)	33	FPH12733-S33BXXXXXXXXXB	1.600(40.64)	1.650(41.91)
13	FPH12733-S13BXXXXXXXXXB	.600(15.24)	.650(16.51)	34	FPH12733-S34BXXXXXXXXXB	1.650(41.91)	1.700(43.18)
14	FPH12733-S14BXXXXXXXXXB	.650(16.51)	.700(17.78)	35	FPH12733-S35BXXXXXXXXXB	1.700(43.18)	1.750(44.45)
15	FPH12733-S15BXXXXXXXXXB	.700(17.78)	.750(19.05)	36	FPH12733-S36BXXXXXXXXXB	1.750(44.45)	1.800(45.72)
16	FPH12733-S16BXXXXXXXXXB	.750(19.05)	.800(20.32)	37	FPH12733-S37BXXXXXXXXXB	1.800(45.72)	1.850(46.99)
17	FPH12733-S17BXXXXXXXXXB	.800(20.32)	.850(21.59)	38	FPH12733-S38BXXXXXXXXXB	1.850(46.99)	1.900(48.26)
18	FPH12733-S18BXXXXXXXXXB	.850(21.59)	.900(22.86)	39	FPH12733-S39BXXXXXXXXXB	1.900(48.26)	1.950(49.53)
19	FPH12733-S19BXXXXXXXXXB	.900(22.86)	.950(24.13)	40	FPH12733-S40BXXXXXXXXXB	1.950(49.53)	2.000(50.80)
20	FPH12733-S20BXXXXXXXXXB	.950(24.13)	1.00(25.40)	50	FPH12733-S50BXXX3XXXXXXXXXB	2.450(62.23)	2.500(63.50)
21	FPH12733-S21BXXXXXXXXXB	1.000(25.40)	1.050(26.67)				

 THIRD ANGLE PROJECTION	GENERAL TOLERANCES (UNLESS SPECIFIED)		APPROVE BY FRANK	DATE 17/DEC/19	PART NO. FPH12733-SXXBXXXXXXXXXB	ITEM NO. FPH12733	 Building Technology Cornerstone	
	DESIGN UNITS Inch (metric)	X.±.012(0.30) X.±5'	CHECKED BY CHERRY	DATE 17/DEC/19	TITLE Board to Board(Pin Header) Pitch 1.27mm 90° Angle(DIP)	REV 2		SHEET NO. 3/3
	SCALE 5:1	X.XX±.006(0.15) .XX'±1'	DRAWN BY ZOEY	DATE 17/DEC/19	THIS DRAWING CONTAINS INFORMATION THAT IS PROPRIETARY TO TXGA INDUSTRIAL ELECTRONICS(S.Z)CO.,LTD AND SHOULD NOT BE USED WITHOUT WRITTEN PERMISSION			
	SIZE A4	X.XXX±.004(0.10) .XXX'±0.5'						